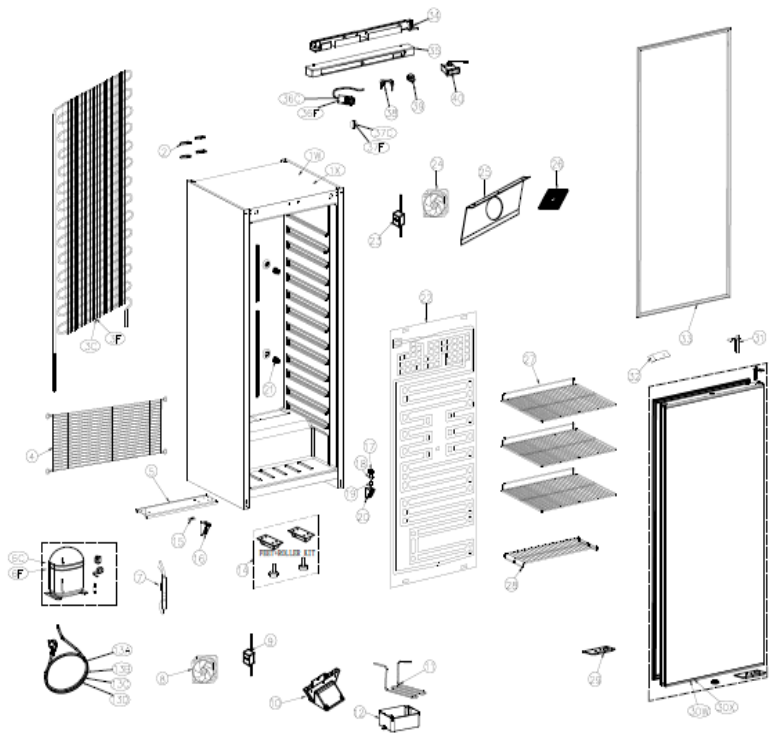
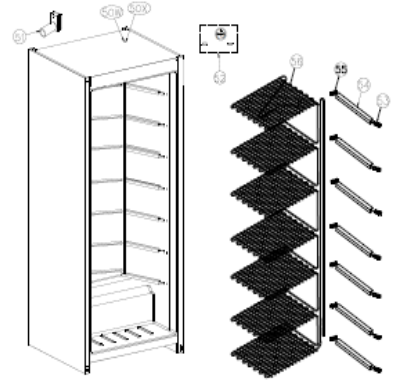


ABS CHILLER SOLID DOOR

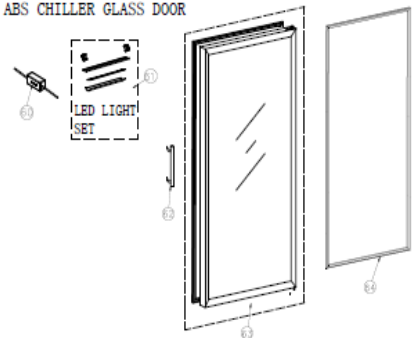


Legenda:  
 W=White Range  
 X=S/S Range  
 C=Chiller  
 F=Freezer

ABS FREEZER



ABS CHILLER GLASS DOOR



DATE: 2020/05/09	VERSION: A1	Unify all 400/600 Range	DESIGN BY: Alberto
DATE: 2019/08/27	VERSION: A0	DESCRIPTION	DESIGN BY:
		SCALE	MODEL Q. TY
		1:1	03/400 Ser. 03/600 Ser.
MATERIAL: S4	UR/URX/UF/UFX/URG/URXG 400-600		
DESIGN BY: Jessie	EXPLODED VIEW		
APPROVED BY: Alberto	CATEGORY	TYPE	GROUP
DATE: 2017/05/03	EV	1CB0	A1
			PART N°
			1200

Lev. 0	Item Number	Descr	Quantity	u.m.	Spare Part
	EV1CB0A11200	UR/UF 400-600 Lt Ser. - EXPLODED VIEW DRAW.(Ver.A1 - S12)	1	pc	1
<b>1W</b>	S41AR00A0001	CR 4-STELL PAINTED FOAMED ASSEMBLY BODY (White Color - S12)	1	pc	1
<b>1X</b>	S51AR20A0001	CRX 4-STAINLESS STELL FOAMED ASSEMBLY BODY (S/S Color-S12)	1	pc	1
<b>2</b>	P01AQ28A0002	CR/CN 2-4-6 Series - REAR CONDENSER SPACER - (S12)	1	pc	1
<b>3C</b>	I01AR08A0001	CR/CRX/CN/CNX 4 - WIRE CONDENSER - (S12)	1	pc	1
<b>4</b>	I01AR09A0003	CR/CN 4 Series - REAR ENGINE ROOM GRID (Black Color-S12)	1	pc	1
<b>5</b>	Z01AR03A0004	CR/CN 4 - REAR ENGINE PLATE (Roller/Castor/ S/S Feet -S12)	1	pc	1
<b>6C</b>	E27B6F2D0000	EKZ80L COMP. DONPER R600a-220/240V 50Hz-1/5 HP RSCR:	1	pc	1
<b>6F</b>	E27B213D0000	LK68CU1 COMP.DONPER R290-220/240V 50Hz-5/16 HP CSIR:	1	pc	1
<b>7</b>	C01AE66A0001	400-600 ABS Ser./CR Salad./CR-CN 7/14 Ser-DRIER FILTER (S12)	1	pc	1
<b>8</b>	E1711A027000	RDM1225B:12Vdc,0,23A, 2,76W - Wire Lenght 300mm	1	pc	1
<b>9</b>	E26B20120031	AC/DC ADAPTER MOD.HYD-1200300EU - (Male Connector)	1	pc	1
<b>10</b>	P01AR63A0002	CR/CN 6 - CR/CN4 - ABS CONDENSER FAN CONVEYOUR (Gray - S12)	1	pc	1
<b>11</b>	C01AR06A0001	CR 4/CRX 4 - CONNECTING PIPE - (S12)	1	pc	1
<b>12</b>	P01AE63A0004	RC 600/RC 400/Saladette CR Series/BBC 386 - WATER TRAY-(S12)	1	pc	1
<b>13A</b>	E25EUG307525	POWER CORD 3x0.75 mmq - EU PLUG - GRAY COLOR 2,5 Mt.	1	pc	1
<b>13B</b>	E25EUK307525	POWER CORD 3x0,75 mmq - UK PLUG - BLACK COLOR 2.5 Mt	1	pc	1
<b>13C</b>	E25AUB307525	POWER CORD 3x0,75 mmq - AUSTRALIAN PLUG - BLACK COLOR 2,5 Mt	1	pc	1
<b>13D</b>	E25INB307525	POWER CORD 3x0,75 mmq - INDIA PLUG - BLACK COLOR 2.5 Mt	1	pc	1
<b>14</b>	KITFT1AE6A00	RC/RN 600-CR/CRX 4-FEET andROLLERS KIT(N.2 FOOT+N.2 ROLLERS)	1	pc	1
<b>15</b>	N01AE62A0007	RC 400/600-RN 400/600 - DOOR PULLEY ON LEFT BOTTOM HINGE	1	pc	1
<b>16</b>	A01AE62A0003	RC 400/600-RN 400/600 - BOTTOM LEFT HINGE (Aluminium Color)	1	pc	1
<b>17</b>	N01AE62A0009	RC/RN 400/600-CR/CN 7-14 - NYLON UP SLIP COVER (White-S12)	1	pc	1
<b>18</b>	Z01AE62A0012	RC/RN 400/600-CR/CN 7-14 - DOWN TURN AXIS - (S12)	1	pc	1
<b>19</b>	Z01AE62A0005	RC/RN 400/600-CR/CN 7-14-PIVOT BOTTOM/UPPER RIGHT HINGE-(S12)	1	pc	1
<b>20</b>	A01AE62A0004	RC 400/600-RN 400/600 - BOTTOM RIGHT HINGE(Aluminium Color)	1	pc	1
<b>21</b>	P01AE60A0006	RC 600/RC 400 - SUPPORT FOR ROLL BOND EVAPORATOR	5	pc	1
<b>22</b>	A01AR07A0001	CR/CRX 4 - ROLL BOND EVAPORATOR+CAPILLARY (White Color-S12)	1	pc	1
<b>23</b>	E26B20120031	AC/DC ADAPTER MOD.HYD-1200300EU - (Male Connector)	1	pc	1
<b>24</b>	E1711A013000	RDM8025B:12Vdc,0,11A,1,32W-Wire Lenght 300mm	1	pc	1
<b>25</b>	S41AR00A0003	CR/CRX 4 - EVAPORATOR FAN (Axial) SUPPORT (White color-S12)	1	pc	1
<b>26</b>	P01AZ67A0003	RC/RCG xxxMED Series -EVAPORATOR FAN SAFETY GRID - (S12)	1	pc	1
<b>27</b>	I01AR29A0001	CR/CRX 4-UPPER/MIDDLE SHELF (Dim.486*410 mm-GAP 10mm)-S12	3	pc	1
<b>28</b>	I01AR29A0002	CR/CRX 4 - BOTTOM SHELF (Dim.502*200 mm-GAP 20mm)-S12	1	pc	1
<b>29</b>	S41AE02A0007	RC/RN 400/600 -BOTTOM TURN AXIS REINFORC.(New self clos.S12)	1	pc	1
<b>30W</b>	S41AE02A0006	RC/RN 400 -DOOR (Gasket+ NEW Self Clos.+Cap) - GRAY Col.	1	pc	1
<b>30X</b>	S51AE22A0005	RCX/RNX 400 -DOOR (Gasket+ NEW Self Clos.+Cap) - GRAY Col.	1	pc	1
<b>31</b>	Z01AE62A0006	ABS 400/600 - CR/QR/CN/QN 7-14-SELF CLOSING SPRING-(S12)	1	pc	1
<b>32</b>	P01AD22A0010	RC/RN/CR/CN ABS Series - UPPER SWITCH STOPPER - (S12)	1	pc	1
<b>33</b>	R01AE02A0005	RC 400/RN 400 - DOOR GASKET (New design)	1	pc	1
<b>34</b>	Z01AE01A0011	RC 400/RN 400-UPPER PANEL HOLDER (New self closing - S12)	1	pc	1
<b>35</b>	P01AE01A0002	RC/RN 400-TOP PANEL GREY COLOR(CHI DESIGN:DOOR SW+BUZZER)	1	pc	1
<b>36C</b>	E20A001C1R10	WPF1.5E THERMOSTAT (R600a - ABS Range)	1	pc	1
<b>36F</b>	E20A001FOW07	WPF 24-150 - SERIES WPF THERMOSTAT	1	pc	1
<b>37C</b>	P01CA61A0002	UR Ser. - FLAT THERMOSTAT KNOB + ROUND STICKER (Chiller-S12)	1	pc	1
<b>37F</b>	P01CA81A0002	UF Ser. - FLAT THERMOSTAT KNOB + ROUND STICKER (Freezer-S12)	1	pc	1
<b>38</b>	Z01AE61A0014	RC 400/600-RN 400/600-LOCK+N.2 KEY(Door whit steel prof.)	1	pc	1
<b>39</b>	E2309WH00002	HF-DO2-1A-2B DOOR SWITCH (2P) 250VAC-4A; CONTACT NO	1	pc	1
<b>40</b>	E28C71295015	DIGITAL THERMOM.-Dim.71X29-RANGE -50~+150C°-SF-SF-100P	1	pc	1
<b>50W</b>	S41AR40A0001	CN 4-STELL PAINTED FOAMED ASSEMBLY BODY (White Color - S12)	1	pc	1
<b>50X</b>	S51AR50A0001	CNX 4 - STAINLESS STELL FOAMED ASSEMBLY BODY (S/S Color-S12)	1	pc	1
<b>51</b>	A01AR40A0002	CN/CNX 4 - PRESSURE BALANCE VALVE - (S12)	1	pc	1
<b>52</b>	P01AR40A0004	CN/CNX 4-PRESS. BALANCE VALVE HOLDER+UPPER/BOTTOM COVER-(S12)	1	pc	1
<b>53</b>	P01AF07A0004	RN 600/RN 400 - LEFT SUPPORT FOR SHELVES EVAPORATOR	7	pc	1
<b>54</b>	A01AE47A0002	RN 400 - FRONTAL EVAPORATOR STRIPES	7	pc	1
<b>55</b>	P01AF07A0003	RN 600/RN 400 - RIGHT SUPPORT FOR SHELVES EVAPORATOR	7	pc	1
<b>56</b>	I01AR47A0001	CN/CNX 4 - SHELVES EVAPORATOR (White Color - 425x412mm)	1	pc	1
<b>60</b>	E26130121200	OUTPUT SUPPLY MW TYPE:APV-12-12; 12W (led light)	1	pc	1
<b>61</b>	E22AL0031020	LED STRIPES LAMP SET - 12VDC 1,2W-N°21 HIGH BRIGHT	1	pc	1
<b>62</b>	S21AZ72A0007	CRG 4/6 - RCG MED - S/S CYLINDRIC HANDLE (Glass door-S12)	1	pc	1
<b>63</b>	A01AE12A0001	RCG/RCXG 400-DOOR(Gasket+Cylindric HandleCap+Down Axis)Alum.	1	pc	1
<b>64</b>	R01AE12A0002	RCG 400/RCXG 400 - DOOR GASKET	1	pc	1